

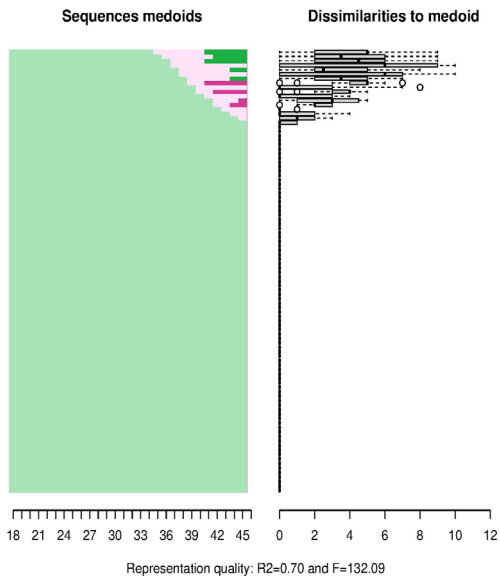
Online appendix

Rees, A., Schnor, C., & Jalovaara, M. (2025). Partnership pathways associated with lifetime childlessness in Belgium and Finland. *Finnish Journal of Social Research*, Advance online publication. <https://doi.org/10.51815/fjsr.146184>

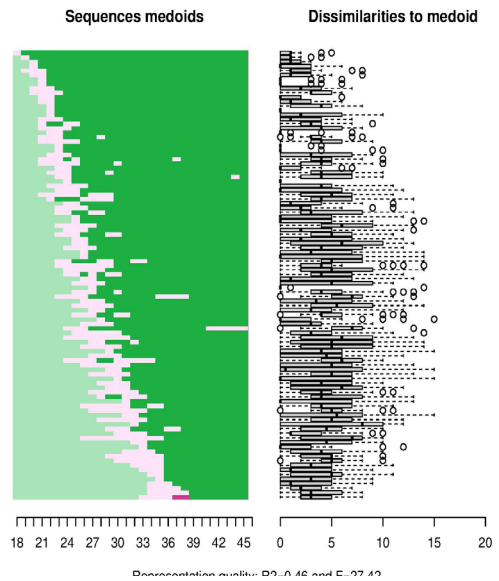
Appendix 1. Partnership trajectory clusters of the childless in Finland and Belgium; relative frequency sequence plots, representative sequences

A) Finland

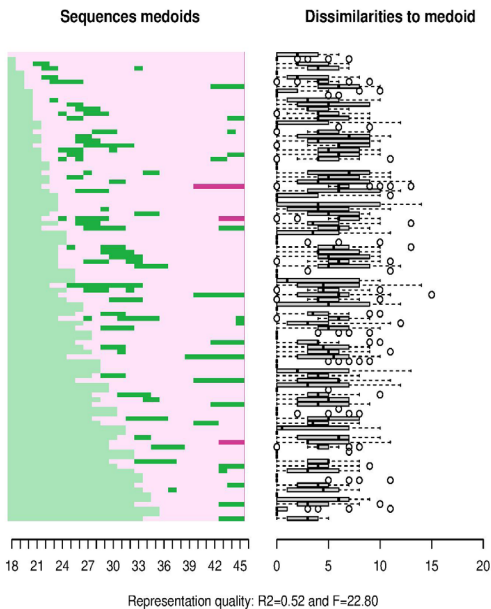
1) Never Partnered, 42%



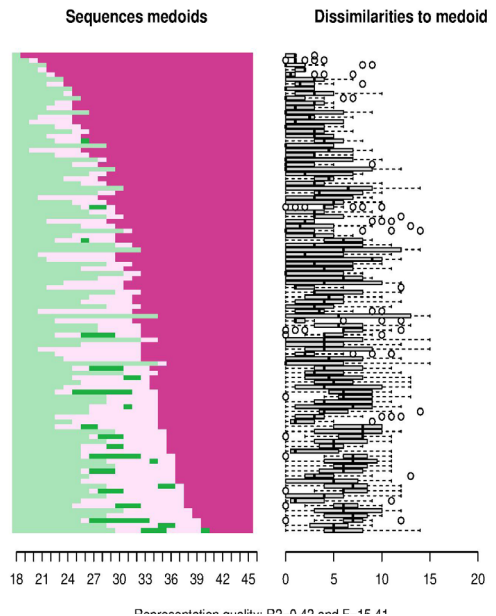
2) Partnership Instability, 16%



3) Cohabitation, often serial, 25%

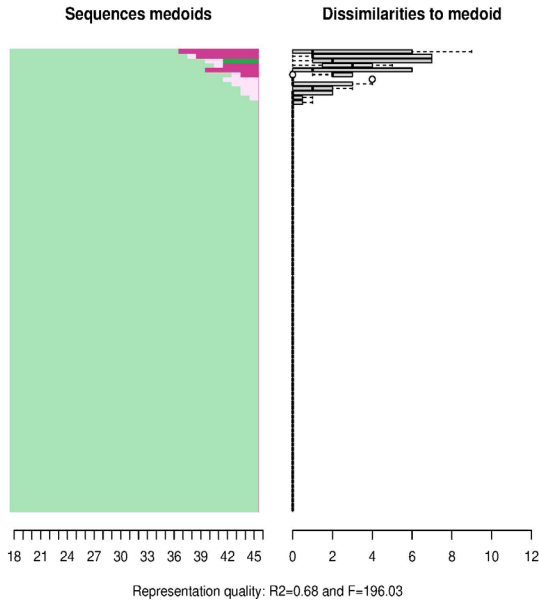


4) Stable Marriage, 17%

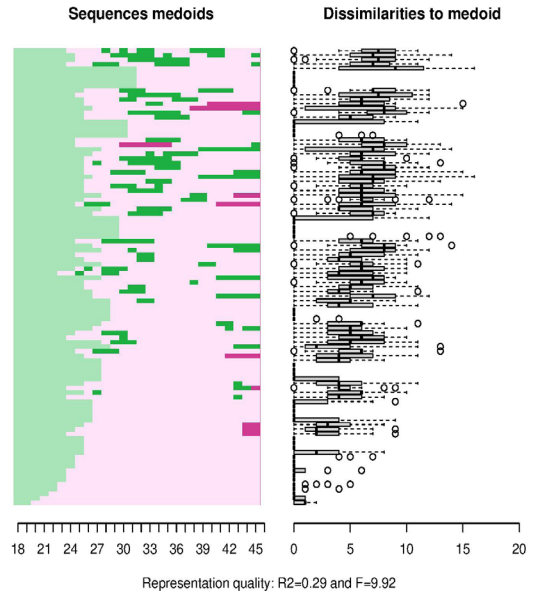


B) Belgium

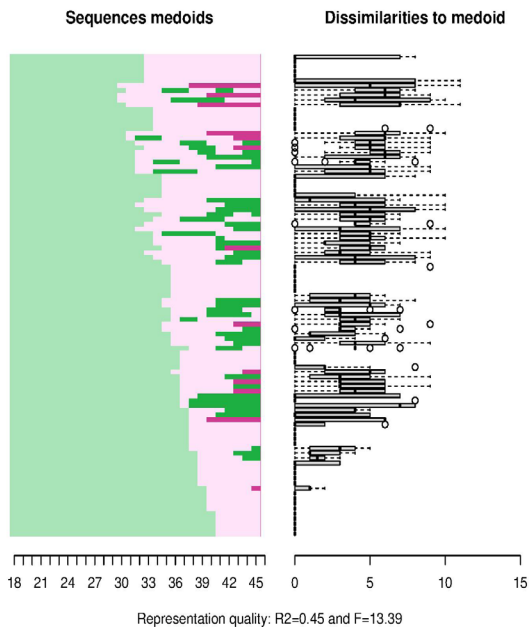
1) Never Partnered, 47%



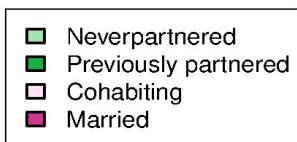
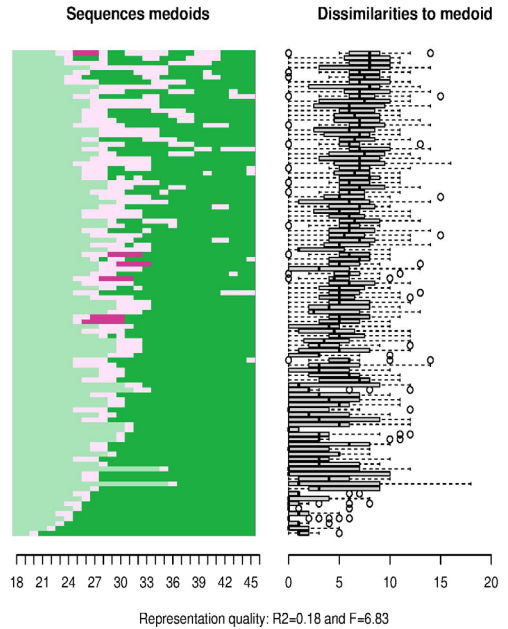
2) Early Cohabitation, 13%



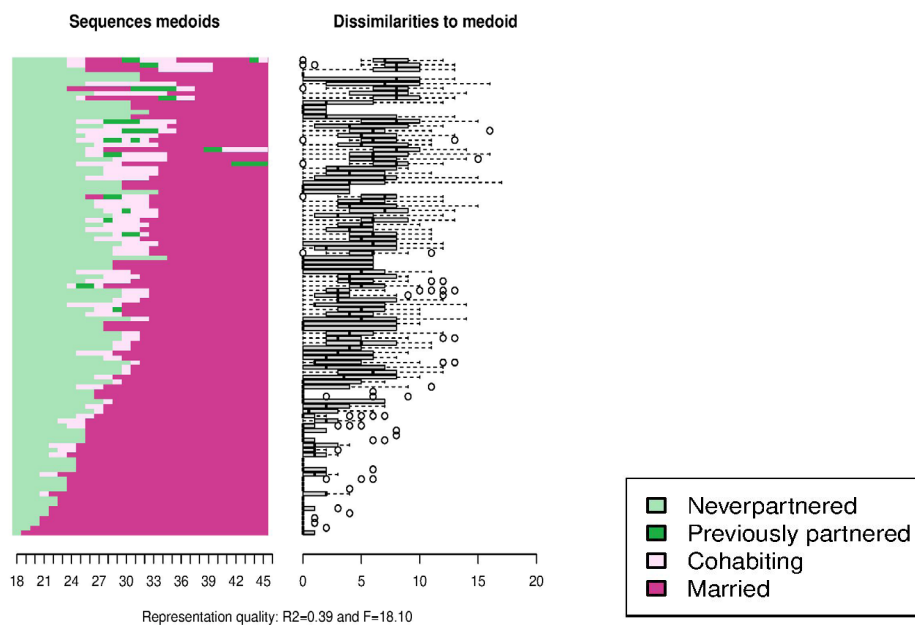
3) Late Cohabitation, 9%



4) Partnership Instability, 16%

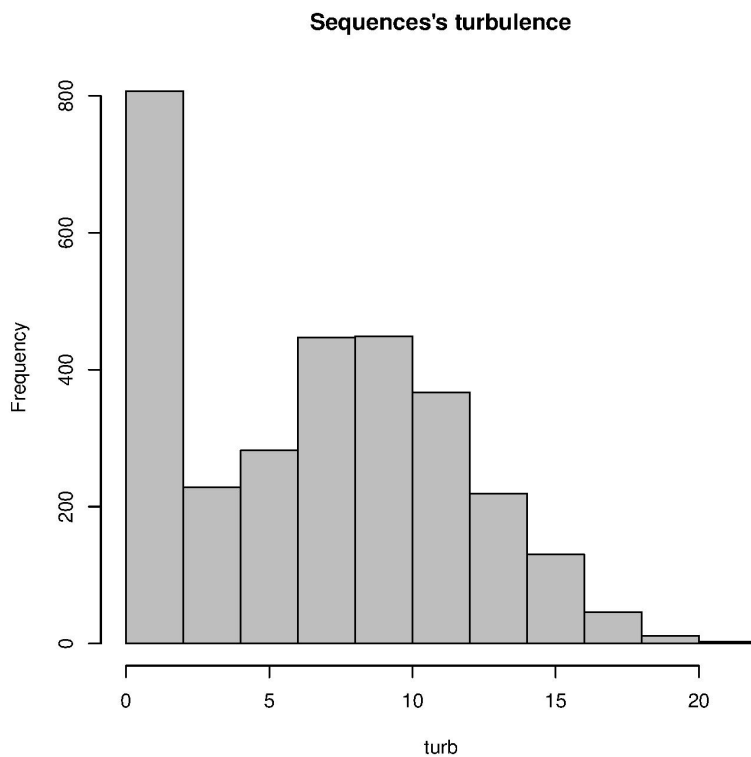


5) Marriage, 15%



Appendix 2. Partnership trajectory turbulence in Finland and Belgium.

A) Finland



B) Belgium

Sequences's turbulence

